

NOTES:

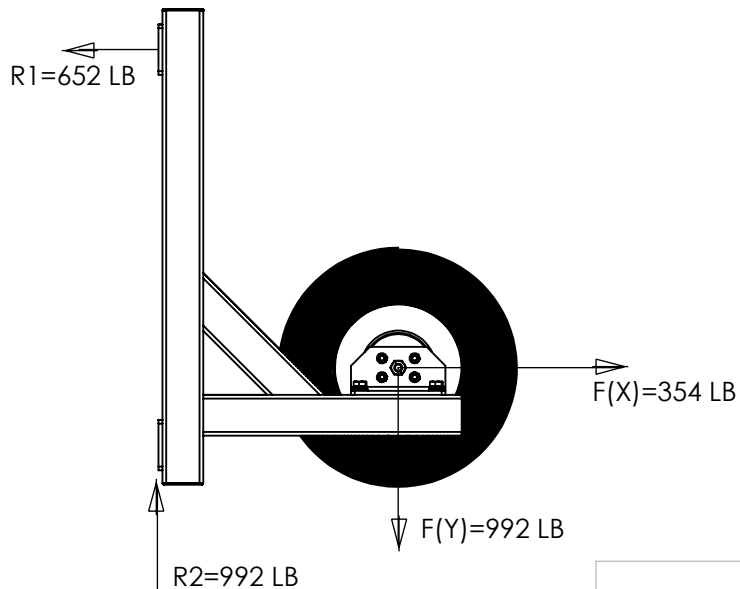
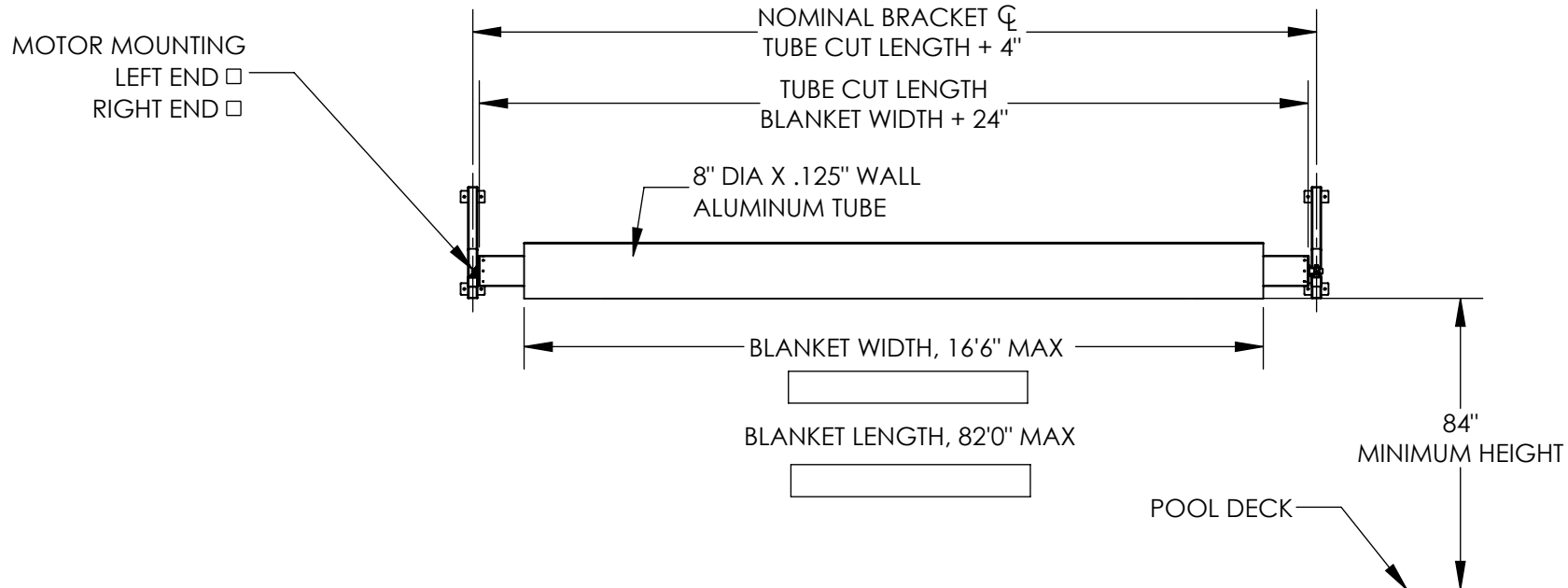
1. EACH ROLLER HAS AN INTERNAL TUBULAR MOTOR POSITIONED AT ONE END.
2. EACH MOTOR REQUIRES A DEDICATED 120Vac 15A GFCI PROTECTED OUTLET. BY OTHERS
3. EACH MOTOR HAS A 3.0M ELECTRICAL CORD.
4. EQUOPOTENTIAL BONDING PER NEC AND LOCAL CODES. BY OTHERS

PLEASE RETURN SIGNED DRAWING TO SR SMITH IF APPROVED

DESCRIPTION:		MOTORIZED WALL REEL HIGH MOUNT	
MATERIAL:			
PART NO.:		REV.	
DRAWN BY:	DATE:		
CHECKED BY:	DATE:		



P.O. BOX 400 - 1017 S.W. BERG PARKWAY
CANBY, OREGON 97013
PHONE (503) 266-2231



NOTES:

1. EACH ROLLER HAS AN INTERNAL TUBULAR MOTOR POSITIONED AT ONE END.
2. EACH MOTOR REQUIRES A DEDICATED 120V_{ac} 15A GFCI PROTECTED OUTLET. BY OTHERS
3. EACH MOTOR HAS A 3.0M ELECTRICAL CORD.
4. EQUOPOTENTIAL BONDING PER NEC AND LOCAL CODES. BY OTHERS

PLEASE RETURN SIGNED DRAWING TO SR SMITH IF APPROVED

DESCRIPTION: MOTORIZED WALL ROLLER LOW MOUNT

MATERIAL:

PART NO.:

REV.

DRAWN BY:

DATE:

CHECKED BY:

DATE:



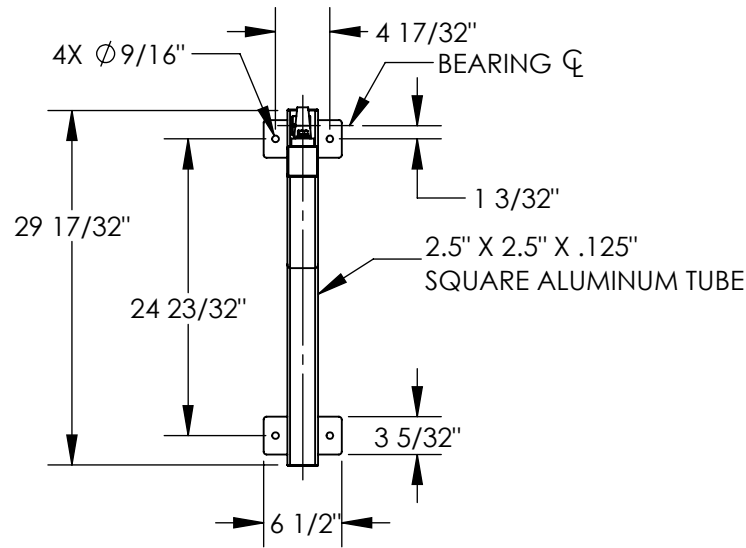
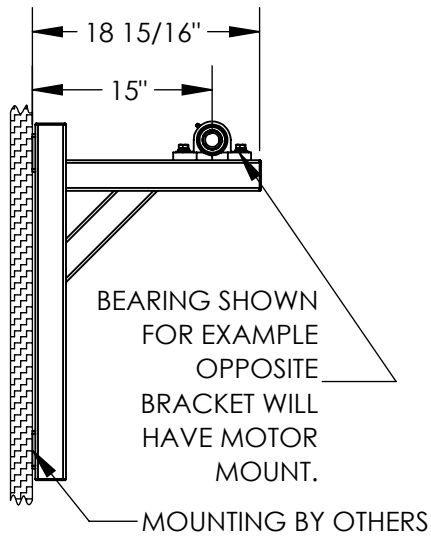
P.O. BOX 400 - 1017 S.W. BERG PARKWAY
CANBY, OREGON 97013
PHONE (503) 266-2231

SIZE:

A

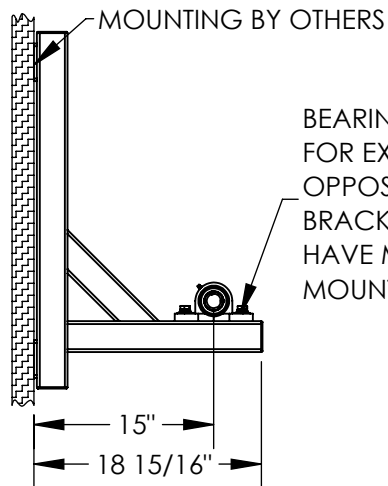
SCALE: 1:48

SHEET 2 OF 3

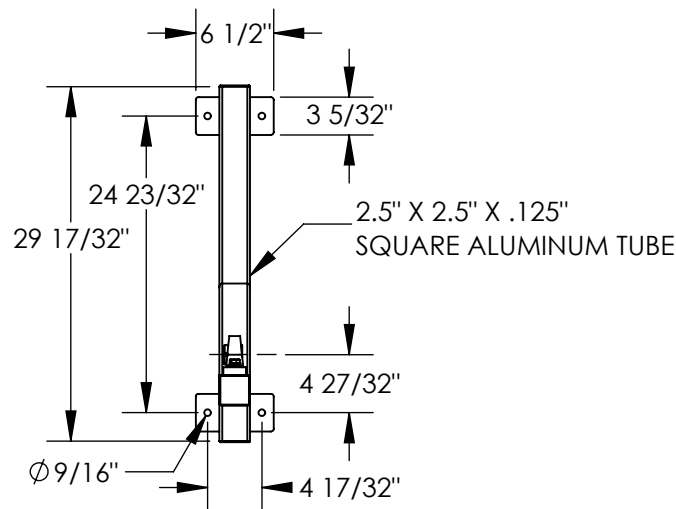


HIGH MOUNT FRAME

LOW MOUNT FRAME



BEARING SHOWN FOR EXAMPLE OPPOSITE BRACKET WILL HAVE MOTOR MOUNT.



DESCRIPTION:		MOUNTING FRAME DETAIL	
MATERIAL:			
PART NO.:		REV.	
DRAWN BY: -		DATE:	
CHECKED BY:		DATE:	

SR SmithTM

P.O. BOX 400 - 1017 S.W. BERG PARKWAY
CANBY, OREGON 97013
PHONE (503) 266-2231

SIZE: A SCALE: 1:48 SHEET 3 OF 3