

Automated Wall Mounted Thermal Pool Cover Storage Reel

WARNING

FOR YOUR SAFETY – This product must be installed and serviced by a contractor who is licensed and qualified in pool equipment by the jurisdiction in which the product will be installed where such state or local requirements exist. The maintainer must be a professional with sufficient experience in pool equipment installation and maintenance so that all of the instructions in this manual can be followed exactly. Before installing this product, read and follow all warning notices and instructions that accompany this product. Failure to follow warning notices and instructions may result in property damage, personal injury, or death. Improper installation and/or operation may void the warranty.



Improper installation and/or operation can create unwanted electrical hazard which may cause serious injury, property damage, or death.

ATTENTION INSTALLER – This manual contains important information about the installation, operation and safe use of this product. This information should be given to the owner/operator of this equipment.

Table of Contents

Section 1. Important Safety Instructions.....	3	Section 3. Operation.....	9
Section 2. Installation.....	4	3.1 Remote Overview.....	9
2.1 Installing the Wall Brackets.....	4	3.2 Changing Motor Direction.....	9
2.2 Mounting the Roller.....	5	3.3 Placing the Cover Onto the Pool.....	10
2.3 Attaching the Pool Cover.....	5	3.4 Pulling the Cover Off the Pool.....	10
2.4 Mounting Multiple Rollers.....	6	3.5 Loss of Power.....	10
		Section 4. Maintenance.....	10
		Section 5. Specifications.....	11

Section 1. Important Safety Instructions

READ AND FOLLOW ALL INSTRUCTIONS

WARNING

Thermal covers are not safety covers and will not support the weight of humans or animals. Do not attempt to walk on or swim under the cover.

WARNING

AVOID DROWNING RISK

- Keep children away. Children or objects can not be seen under cover.
- This is not a safety cover. Keep off cover. It will not support weight.
- Remove cover(s) completely before entry of bathers. Entrapment possible.
- Unsecured or improperly secured covers are a hazard.
- Failure to follow any instructions may result in injury or drowning.

WARNING

- It is important for the safety of everyone to follow these instructions. The roller system is not intended for use by very young children or infirm people without supervision.
- Young children should be supervised to ensure that they do not play with the rollers.
- Do not allow children to play with fixed controls.

CAUTION

- Frequently examine the installation for imbalance and signs of wear or damage to cables.
- Do not use if repairs are necessary.
- Never attach the cords to the blanket and then tie the other end off to a fixed object.
- Broken blanket/roller attachment cords should be replaced immediately to prevent blanket creasing.

SAVE THESE INSTRUCTIONS

Section 2. Installation

2.1 Installing the Wall Brackets

1. Measure the width of pool and mark the center line, transfer this line to base of wall.
2. Check which side of the center line the power is located on. The motor side of roller should be on the same side as the power.
3. With the roller on the ground, attach the motor bracket, Item 4, to the roller, Item 1 (see Figure 1). Be careful to not pull out the black end cap of motor. It is better to use some duct tape to keep end cap in place while setting up, see Figure 2.
4. At the other end of roller, apply some anti-seize lubricant on the shaft and slide on the bearing, Item 13. The set screws should be facing outwards, DO NOT tighten the set screws yet. This allows you to slide the bearing if the holes do not align with the mounting bracket at Step 9.
5. Now measure from the center of the bolt holes of motor bracket to the center of the bolt holes of the bearing case and mark a center line on the roller. See Figure 3.

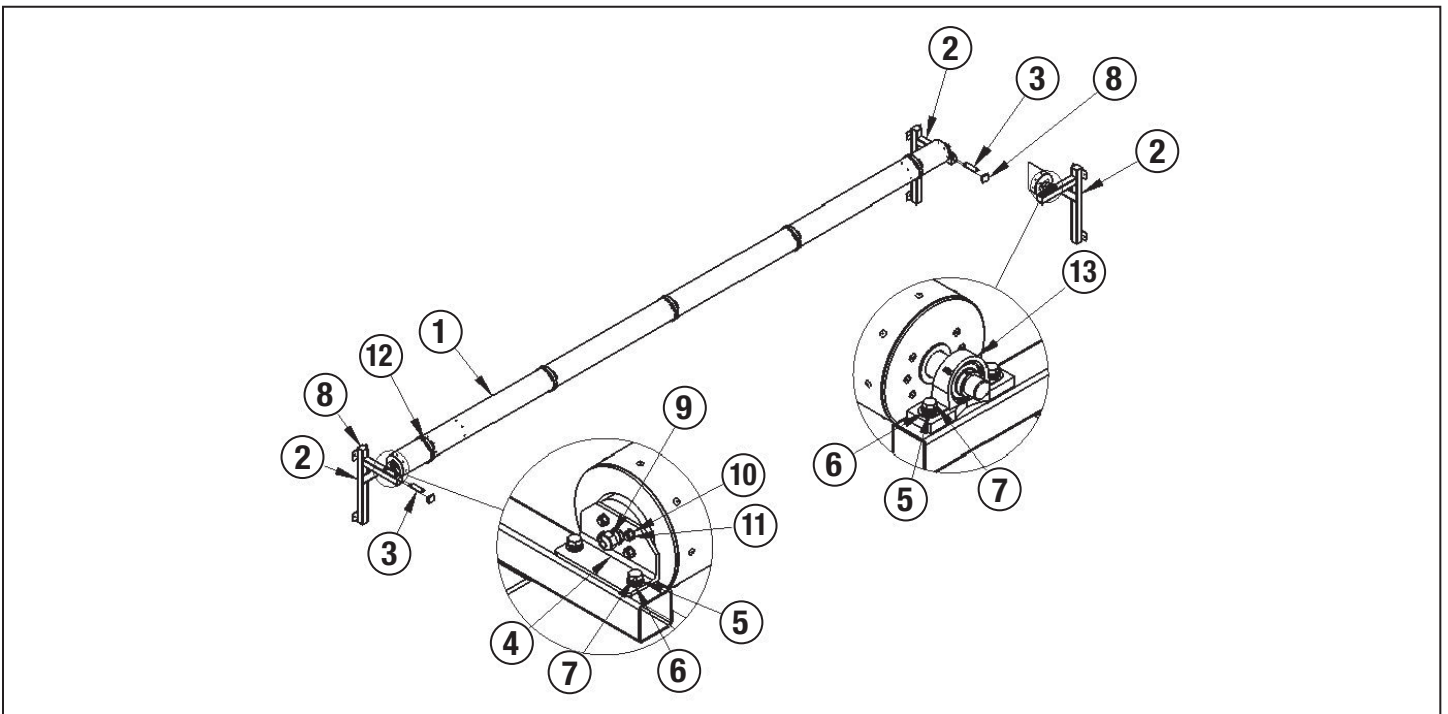


Figure 1.

Item No.	Description	QTY
1	Wall Roller Assembly	1
2	AR Wall Mounted End Frame	2
3	AR Bearing Mount Plate M12	2
4	AR End Frame Motor Bracket	1
5	M12 Split Lock Washer, DIN 127B, 316SS	4
6	M12 Flat Washer, DIN 125, 316SS, 13 mm ID x 24 mm OD x 2.5 mm THK	4
7	Bolt, M12 x 40 mm, Hex Head	4
8	Tube Closure Plug 65 mm x 65 mm	6
9	Gland Insert (Strain Relief) PG11	1
10	M8 Flat Washer, 316SS	4
11	M8 x 1.25, Nyloc Nut, 316SS	4
12	144" Strap, Pool Cover; Inc. Dowel	5
13	SP206 Bearing Housing with 30 mm Stainless Bearing	1

NOTE: When storage reel length is less than 18 ft, QTY of Item 12 is 3.

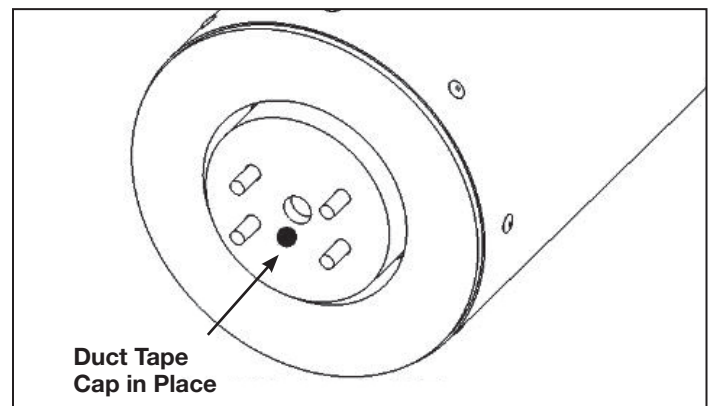


Figure 2.

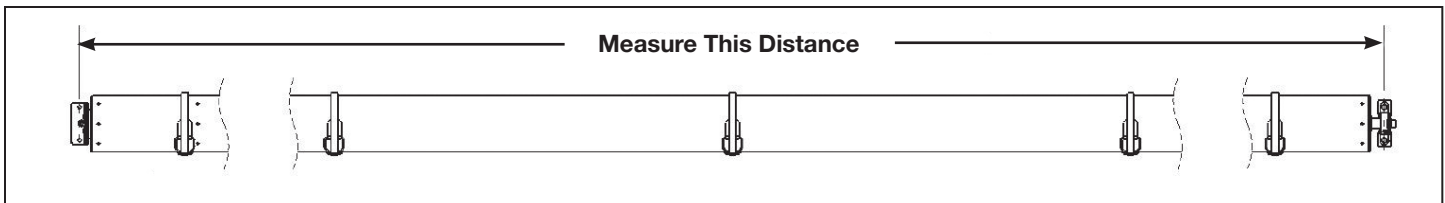


Figure 3.

6. At the base of the wall, mark the width of the roller by aligning the center mark on the wall with the center mark on the roller. Then mark the center of the bolt holes (motor bracket and bearing ends) on the wall. Depending on how high up the roller will be mounted use a level to mark a vertical (plumb) line on the wall or a laser level.
7. Position the wall bracket to the height you want, align the center of the bracket to one of the vertical lines from Step 6. Mark the location of one mounting hole on the wall. Remove the bracket and install the mounting hardware at that location. Realign the bracket to the vertical line and use the mounting hardware that was just installed to hold the bracket in place. Mark the three remaining mounting holes, remove the bracket, and install the remaining mounting hardware. Finally, mount the bracket in place.
8. Mount the second wall bracket using the same method described in Step 7. Ensure that this bracket is aligned with the opposite vertical line from Step 6 and is aligned horizontally with the bracket installed in Step 7.

2.2 Mounting the Roller

1. With the wall brackets mounted, use a suitable equipment lift, to lift roller up on top of brackets. Apply a small bead of silicon around stainless bearing casting before bolting down, See Figure 4. Slide the mounting plates, Item 3 in Figure 1, into the tubes that are protruding from the wall. The holes in the plates need to align with the holes in the tube. The bolts that hold down the bearing and motor bracket thread into the hole in the mounting plate. Once the roller is bolted down, apply Loctite-242 “Blue,” or equivalent, to the bearing’s set screw, then install and tighten the set screws.

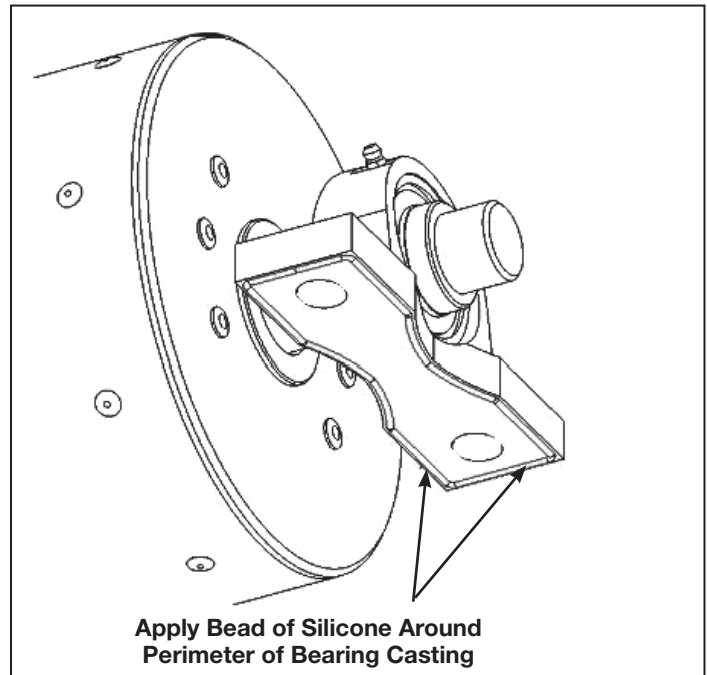


Figure 4.

2. Motors are not shipped with a plug on the power cord. Have a three-prong (NEMA 5-15 TYP) plug wired by an electrical contractor. Plug in and turn on power and check remote. The brackets have accommodation for routing the power cable through them, if so desired. Install the tube closure plugs, Item 8, Figure 1 after the wiring is complete. Note the remote will come with a short limit setting. Adjust the limits as described later in this document per the flow chart in section 3.2, *Changing Motor Direction*.

2.3 Attaching the Pool Cover

1. Put the covers onto the pool with the safety warnings facing upward onto the water.
2. Attach the strap to pool cover by placing the dowel attached to cover through the loop of rope at the end of the strap, reference Figure 5.
3. Attach cords to roller by placing the dowel at the end of the strap through the loop of rope on the roller. Similar to how the strap is attached to the pool cover.



Figure 5.

4. Making sure all attachment straps are close to the same length.
5. Using the remote control, wind the strap and cover on to the roller.

2.4 Mounting Multiple Rollers

1. Once the first roller is mounted, additional rollers can be mounted in a similar manner to what is described previously in this document. This instruction will describe the process for mounting an additional roller to the right of the previously mounted roller.
2. First verify if the previously mounted roller has its brackets in the high mount or low mount position. The next roller assembly must have its brackets mounted in the opposite position.
3. The left bracket of the next roller assembly must be installed to the left of the right bracket of the previously installed roller assembly. The distance between these brackets will vary. That distance is determined by what combination of motor or bearing is mounted on each bracket. Refer to Figures 7-10.

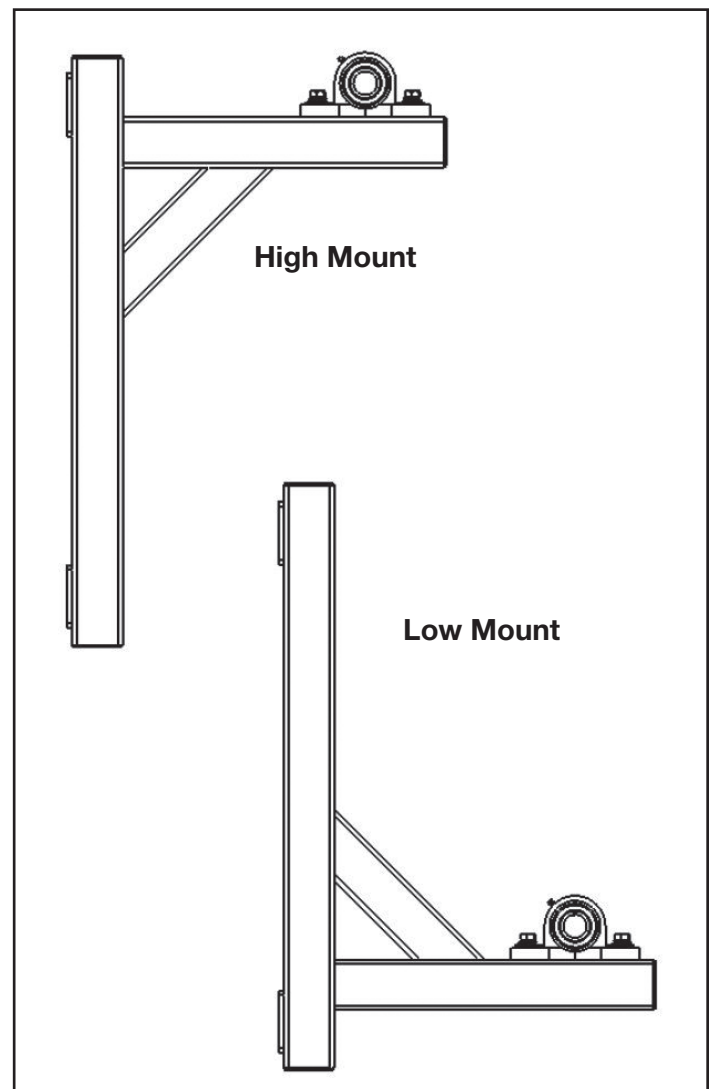


Figure 6.

Bearing at Both Brackets – 28 3/8"

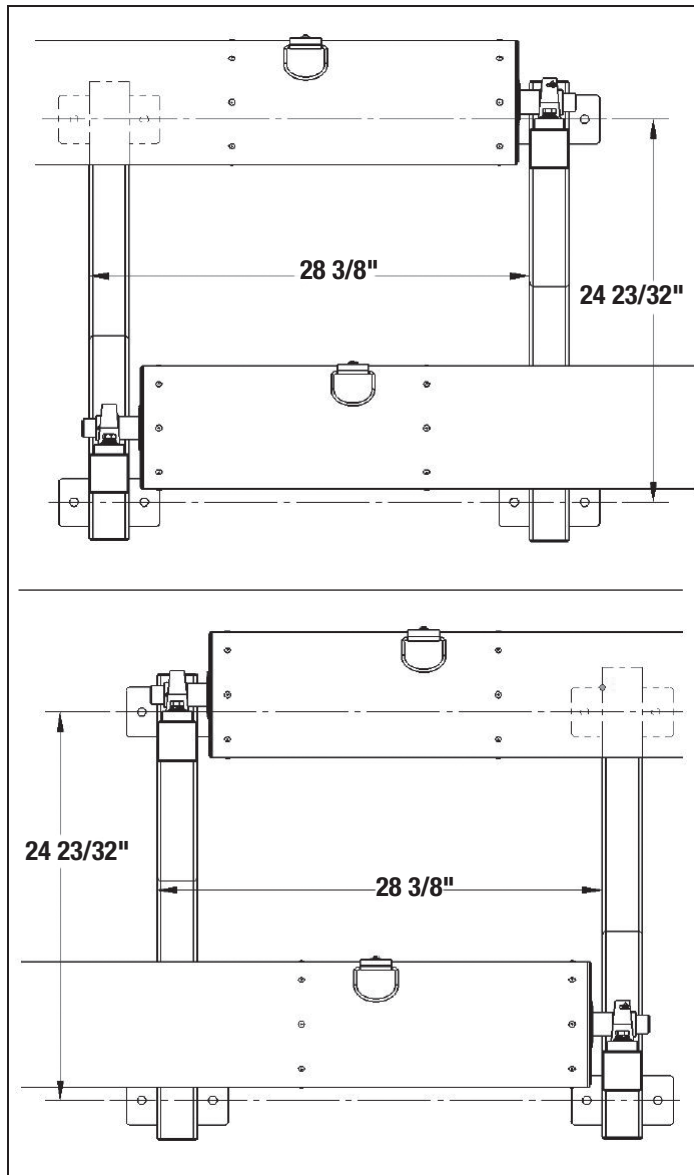


Figure 7.

Motor at RT Roller, Bearing at LT Roller – 27 7/8" Spacing

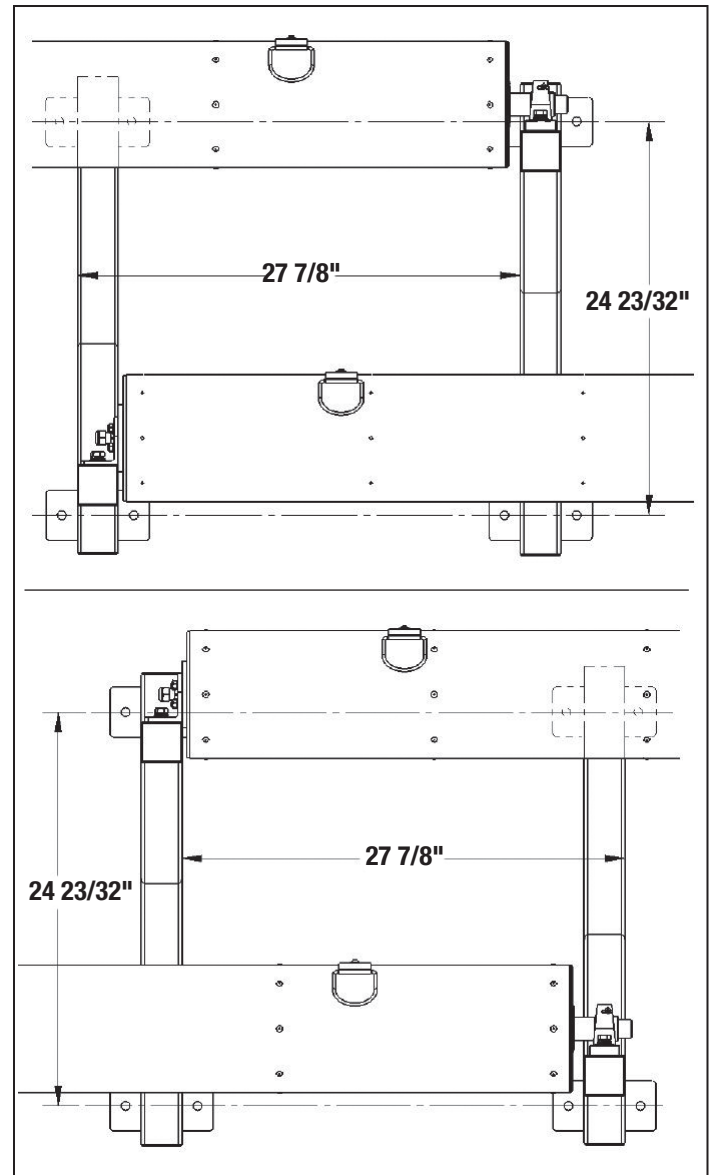


Figure 8.

Motor at Both Brackets – 27 1/2"

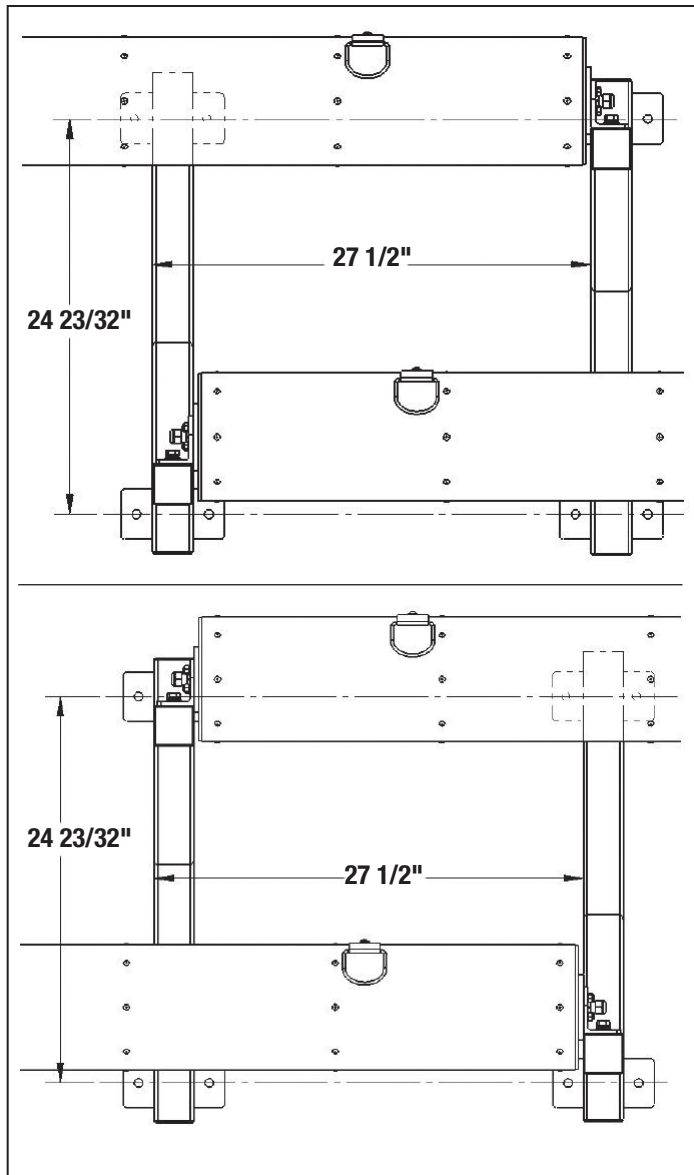


Figure 9.

Bearing at RT Roller, Motor at LT Roller – 27 7/8" Spacing

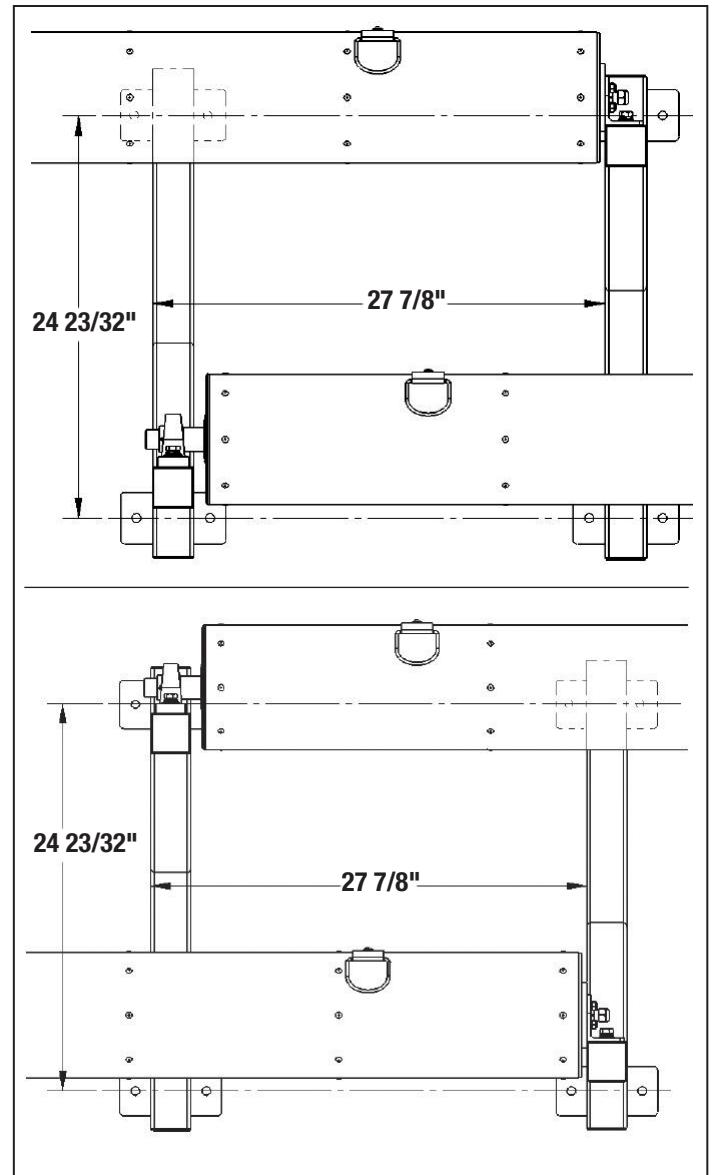


Figure 10.

4. Measure and mark the distance on the wall per the illustrations above. Then mark a plumb line using a level or use a laser level.
5. Mark a horizontal line from the bottom mounting plate of the previously installed bracket to where it intersects the plumb line.
6. Align new bracket to the horizontal and vertical lines.
7. Install this bracket per the instructions.
8. Install the right bracket and roller per the instructions.

Section 3. Operation

3.1 Remote Overview

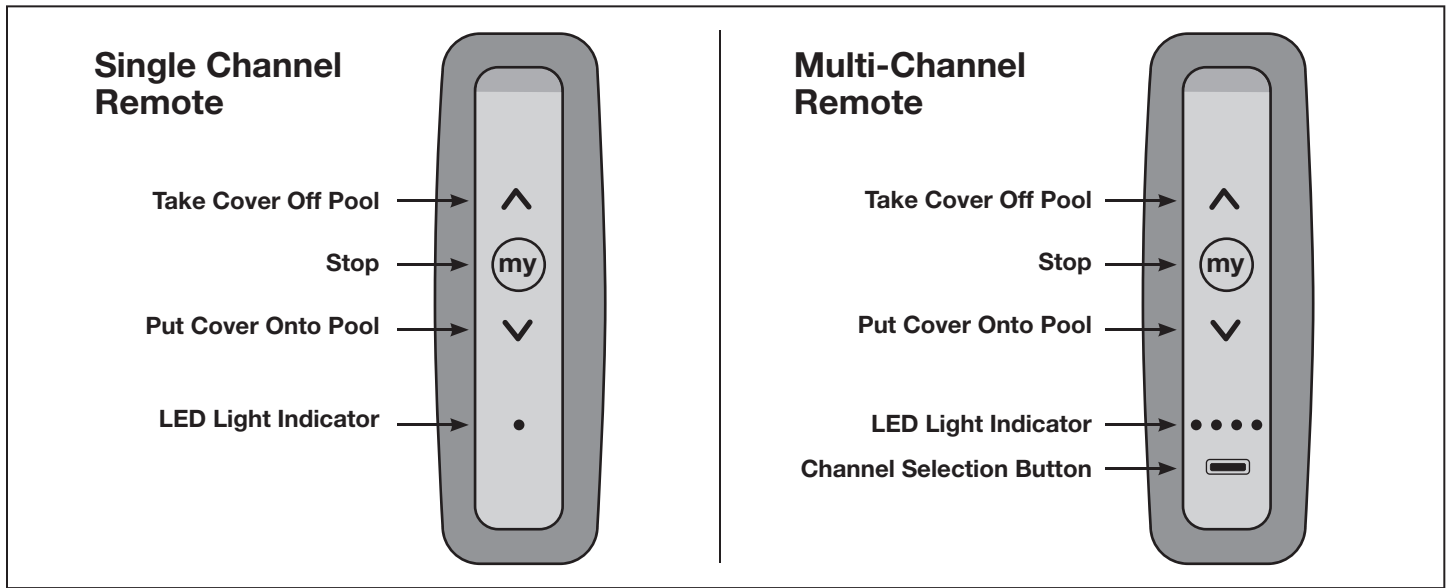


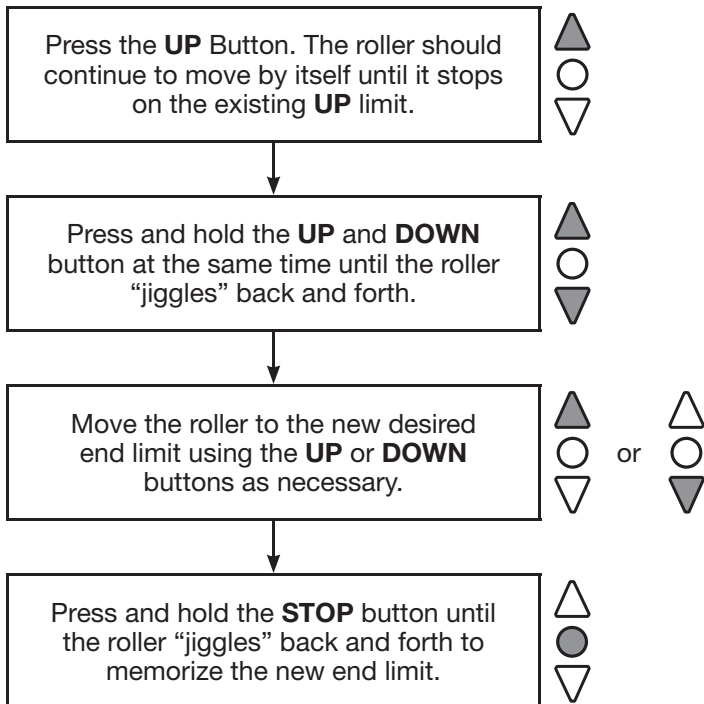
Figure 11.

3.2 Changing Motor Direction

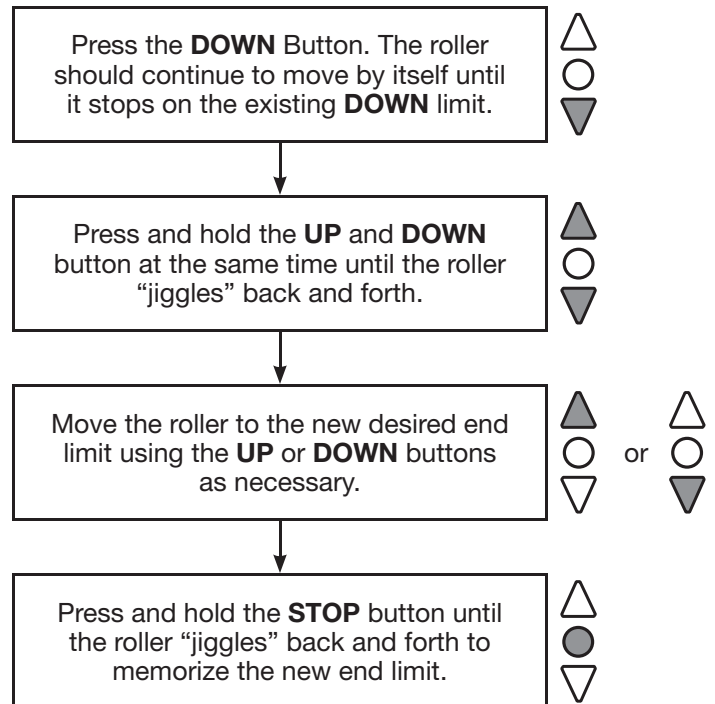
NOTE: If the motor rotates in the opposite direction than desired, i.e., rolls down when the **UP** button is pressed. Press and hold the **STOP** button for more than 5 seconds until the motor “jiggles” back and forth.



To Adjust the UP Limit:



To Adjust the DOWN Limit:



NOTE: Motors are not rated for continuous operation and may stop for “thermal cut-out” after 4-7 minutes of operation. This is normal. If this occurs during commissioning, then motor cannot resume operation for 10-15 minutes. It should not occur during the normal mode of cover use.

3.3 Placing the Cover Onto the Pool

1. Have the relevant remotes and pull cords ready.
2. Lower the blanket using the **DOWN** button (▼) on the remote and stop it at a level where you can easily attach the pull cord to the blanket.
3. Walk the pull cord to the opposite end of the pool.
4. Position yourself so that you are looking at the roller and have the pull cord in your hand.
5. Press the down button again and lead the blanket onto the water as the roller sheds it. Do not apply excess tension on the rope the motor must be allowed to shed the blanket at its own pace. The operator is only required to pull the blanket onto the pool at the same rate the motor is shedding the blanket from the roller. Ensure that the pool cover corners are folded and does not catch on any obstacles. The roller will automatically stop when the blanket is fully deployed.
6. Repeat this process with the next roller.

3.4 Pulling the Cover Off the Pool

1. Have the relevant remotes ready.
2. Position yourself at the opposite end of the pool and look at the roller with the corresponding remote in your hand.
3. Press the **UP** button (▲) and watch as the blanket automatically retracts off the pool onto the roller. Operator must maintain visual contact through this process and use the **STOP** button (**my**) (●) on the remote should any problem occur.
4. Repeat this process with the next roller.

3.5 Loss of Power

In the event that the roller loses power for whatever reason, the blanket should be folded neatly onto the pool deck using an accordion technique to remove it from the pool. Do not attempt to roll the blanket up on the water. Two or more people may be needed to do this task.

Place the blanket back onto the pool before winding back onto the roller as the roller may overload if it is pulling the first layer of the blanket from the bottom of the folded stack.

Section 4. Maintenance

Pool Cover Care

1. Do not allow covers to crease when loading them onto rollers. Creases are extremely hard to remove once engrained makes cover handling more difficult.
2. Always replace broken roller attachment cords. The absence of cords can promote creasing. Replacement cords are available from the manufacturer.
3. Do not administer concentrated chemicals (e.g. chlorine) next to or on covers. Doing so may cause damage to the cover.
4. Lane ropes can remain in the pool while covers are in use but will lead to some level of wear on the covers. However broken lane rope segments can damage the cover.

Section 5. Specifications

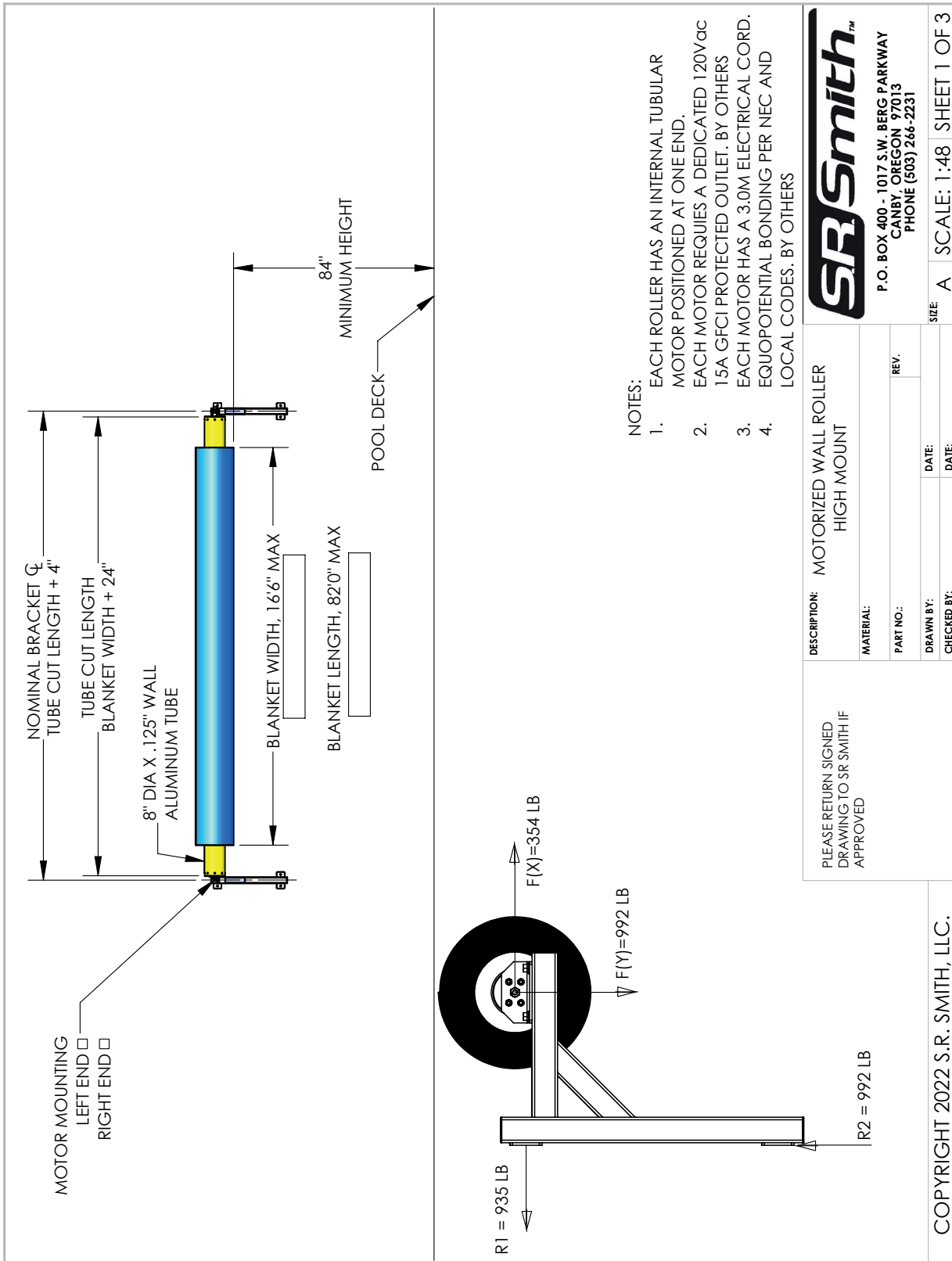


Figure 12.

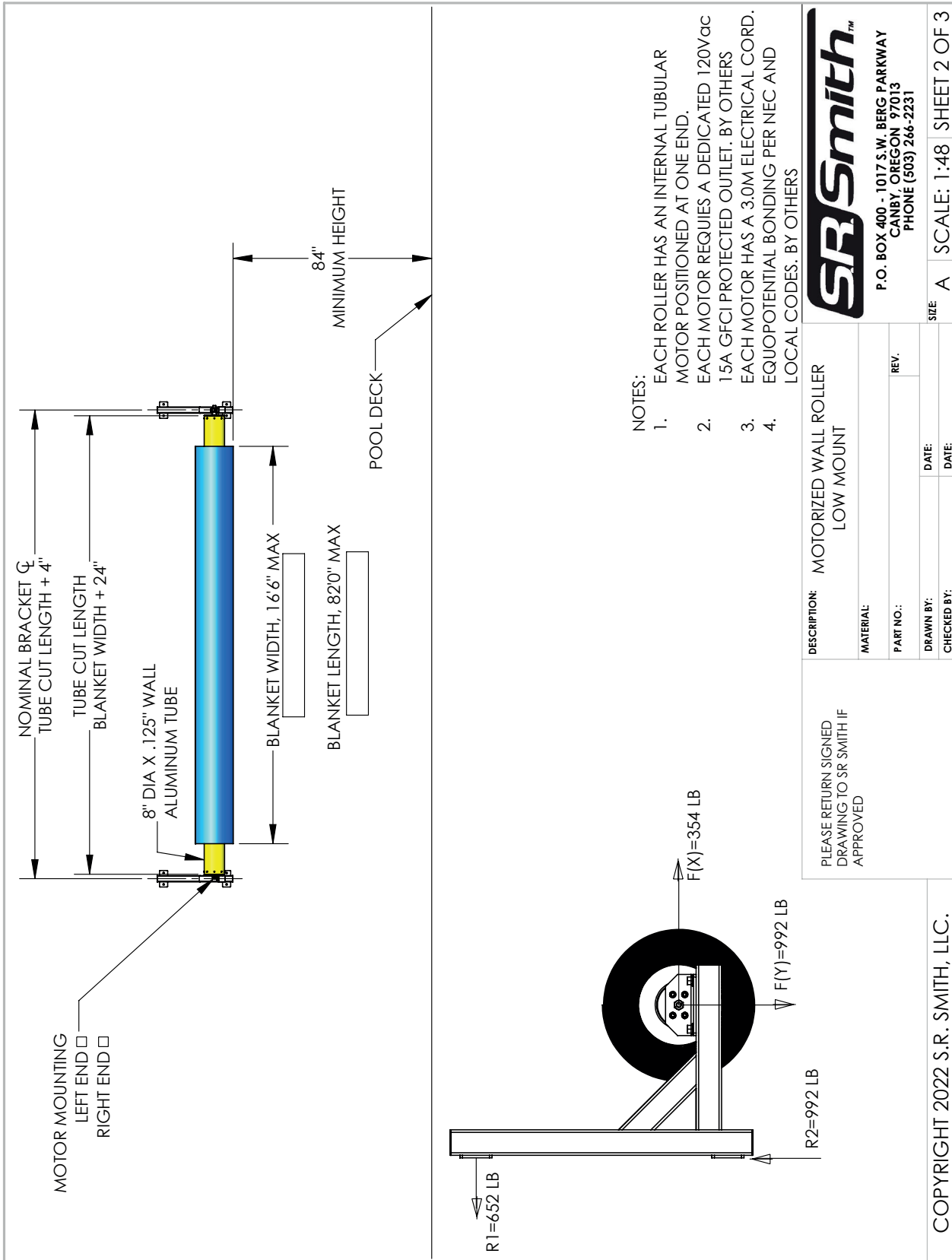


Figure 13.

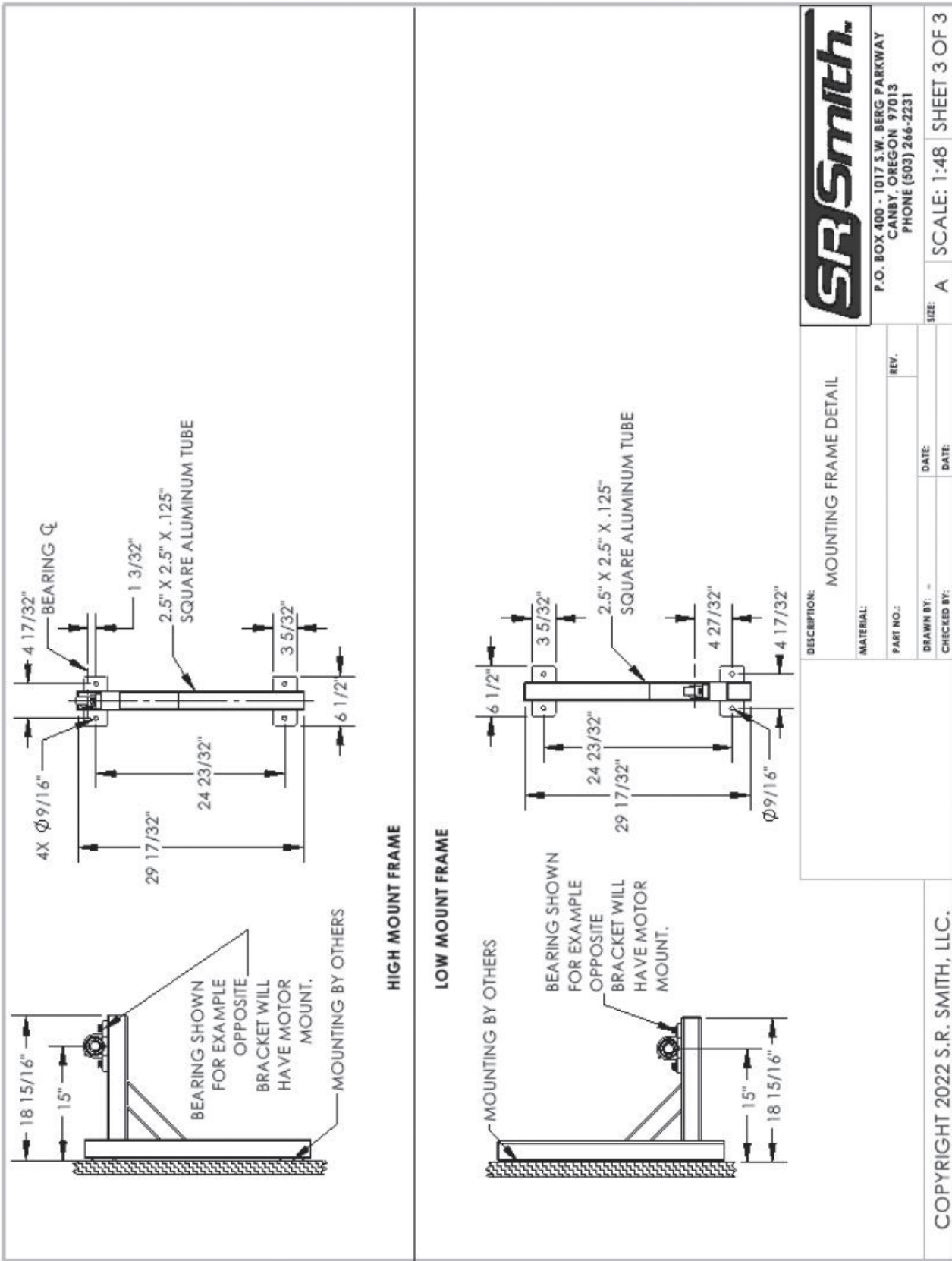


Figure 14.

NOTES

NOTES

S.R. Smith, LLC
1017 SW Berg Parkway
Canby, OR 97013, USA
srsmith.com | 1.800.822.7933

A Fluidra Brand

©2023 S.R. Smith, LLC. All rights reserved. All trademarks are the property of their respective owners.

AWR-20