

Anchors & Anchor Accessories

Universal Anchor

- 6" deep, includes 2" spacer to create 4" socket where required
- Injection molded plastic — resists corrosion
- Includes bronze wedge with stainless steel bolt and 1/4-20 UNC ground screw
- Anchor cap included for flush look
- Recommended for rails and games

Part No.	Description	Shipping Wt.
AS-100P	1 anchor	1 lb



6" Bronze Anchor

- This anchor does not utilize any wedges
- The anchor cap provides a flush look when games are removed
- 1/4-20 UNC brass ground screw for bonding
- Recommended for rails and games

Part No.	Description	Shipping Wt.
AS-100EB	1 socket w/o cover	2 lbs
AS-100EC	bronze perforated cover	.5 lb



6" Bronze Anchor

- 6" deep
- Drilled hole in bottom allows drainage
- No wedge, but includes 1/4-20 UNC ground screw
- Accommodates 1.90" OD round tubing
- Anchor cap included for flush look
- Recommended for games

Part No.	Description	Shipping Wt.
AS-100D	1 anchor	2.2 lbs
8-412	Cap (included)	.5 lb



4" Bronze Anchor

- 4" deep
- Accommodates 1.90" OD tubing
- Includes bronze wedge, washer, bolt and 1/4-20 UNC grounding bolt
- Recommended for rails

Part No.	Description	Shipping Wt.
AS-100B	1 anchor	2 lbs
8-409A	Wedge kit (included)	1 lb



4" Bronze Anchor (1.50")

- 4" deep
- Accommodates 1.50" OD tubing
- Includes bronze wedge, washer, bolt and 1/4-20 UNC grounding bolt
- Recommended for rails

Part No.	Description	Shipping Wt.
AS-200B	1 anchor	2 lbs
8-411A	Wedge (included)	.2 lb



3" Bronze Anchor

- 3" deep
- Accommodates 1.90" OD tubing
- Includes wedge, washer, bolt and 1/4-20 UNC grounding screw
- Recommended for rails

Part No.	Description	Shipping Wt.
AS-100C	1 anchor	2 lbs
8-410-A	Wedge kit (included)	1 lb



4" Bronze Institutional Anchor

- 4" deep, for 1.90" OD fixtures
- Includes bronze wedge, bolt and washer
- Recommended for commercial rails and lifeguard stands

Part No.	Description	Shipping Wt.
IAS-100	1 anchor	3 lbs



Anchor Cover Plate

- 304 stainless steel
- For use with IAS-100 or IAA-100 anchor

Part No.	Description	Shipping Wt.
CP-100	1 cover plate	.8 lb

4" Bronze Institutional Anchor Assembly

- 4" deep, for 1.90" OD fixtures
- For additional security, the stainless steel plate extends below the base of the anchor socket
- Includes steel plate, neoprene gasket, flat washer, hex nut, anchor socket, keyhole pin, 1/2" x 6" bolt, tile stop collar and escutcheon
- Hole in bottom for drainage
- Recommended for commercial rails and lifeguard stands

Part No.	Description	Shipping Wt.
IAA-100	1 anchor assembly	10 lbs



RockSolid™ Starting Platform Anchor

- Accommodates 2.5" square tubing
- Adjustable wedge assembly exerts continuous, even pressure on the platform post to eliminate platform movement
- Anchor cap included
- Safe-T-Cap: utilizes the anchor's wedge bolt to tighten and secure in place.
- Recommended for single-post starting platforms: Legacy, RecordQuest & Universal

Part No.	Description	Shipping Wt.
27-107	1 anchor	5 lbs
4-113-1	Anchor cap	1 lb
20-191	Safe-T-Cap	3 lbs



RockSolid™ Dual Post Starting Platform Anchor

- Accommodates 1.90" OD round tubing
- Adjustable wedge assembly exerts continuous, even pressure on the platform post to eliminate platform movement
- Anchor caps included
- Recommended for Legacy II starting platforms

Part No.	Description	Shipping Wt.
27-108	1 anchor set	15 lbs



Dual Post Starting Platform Anchor

- Accommodates 1.90" OD round tubing
- Includes a 1/4-20 UNC grounding screw
- Anchor caps included
- Recommended for dual-post starting platforms: Legacy II standard only

Part No.	Description	Shipping Wt.
27-105	1 anchor set	5 lbs



Double Anchor Socket Assembly

- Accommodates 1⁵/₈" OD ring rails
- Includes bronze wedge, nuts, washers, 1/4-20 UNC grounding screw and escutcheons
- Recommended for residential and commercial ring handrails

Part No.	Description	Shipping Wt.
34-305A	Aluminum anchor	10 lbs
34-306A	Bronze anchor	13 lbs
8-415A	Gibraltar Wedge Retro-fit kit	1 lb
8-420	Double escutcheon plate	1 lb
8-420-CP	Chrome plated bauble escutcheon plate	1 lb
4-111	Stabilizer plug	.5 lb



Flush Anchor Pair

- Sold as a pair to be used with the two piece anchor plate
- Anchors are 2.5" long and have 1" diameter at the top
- Includes anchor bolts, decorative filler screws, bonding screws and washers
- Recommended for Varsity Cantilever starting platforms (included)

Part No.	Description	Shipping Wt.
A41659-0	1 pair	2 lbs



Escutcheons

Double Escutcheon Plate

- Recommended for residential and commercial ring handrails

Part No.	Description	Shipping Wt.
8-420	1 double escutcheon	1 lb



Oblong Escutcheon

- Chrome-plated cast brass
- 4" long
- For use with 1.90" OD tubing
- Equipped with stainless steel set screws
- Recommended for the IAS-100 anchor (included)

Part No.	Description	Shipping Wt.
IEP-100	1 escutcheon	1 lb



Oblong Escutcheon (1.90")

- 304 stainless steel
- For use with 1.90" OD tubing
- Recommended for rails and bronze anchors

Part No.	Description	Shipping Wt.
EP-100A	1 escutcheon	.25 lb



Round Escutcheon (1.90")

- 304 stainless steel
- 4.5" in diameter
- For use with 1.90" OD tubing
- Recommended for rails and games

Part No.	Description	Shipping Wt.
EP-100F	Stainless Steel	.5 lb
EP-100F-PW	Pearl White	.5 lb
EP-100F-RG	Rock Gray	.5 lb
EP-100F-SG	Silver Gray	.5 lb
EP-100F-TP	Taupe	.5 lb
EP-100F-VW	Vinyl White	.5 lb
EP-100F-VT	Vinyl Taupe	.5 lb
EP-100F-VG	Vinyl Gray	.5 lb



Round Escutcheon (1.625")

- 304 stainless steel
- 3 1/4" in diameter
- For use with 1.625" OD tubing
- Recommended for P-rails

Part No.	Description	Shipping Wt.
EP-103	1 escutcheon	.2 lb



Snap-Tite Escutcheon

- High-density plastic
- 5³/₁₆" in diameter
- For use with 1.90" OD tubing
- Recommended for rails and games

Part No.	Description	Shipping Wt.
EP-200-MC	Chrome	.25 lb
EP-200-PW	Pearl White	.25 lb
EP-200-RB	Royal Blue	.25 lb
EP-200-SG	Silver Gray	.25 lb
EP-200-PG	Pewter Gray	.25 lb
EP-200-TP	Taupe	.25 lb



Round Escutcheon (1.50")

- 304 stainless steel
- 4.5" in diameter
- For use with 1.50" OD tubing

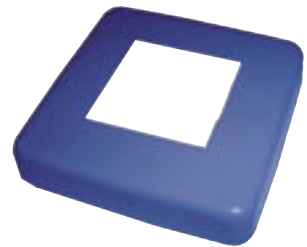
Part No.	Description	Shipping Wt.
EP-150	1 escutcheon	.5 lb



RecordQuest™ Escutcheon

- 304 stainless steel, powder coated
- 5.25" square
- For use with RecordQuest starting platforms

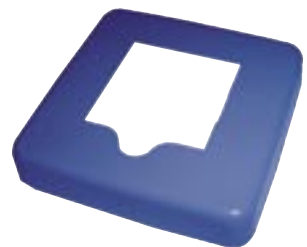
Part No.	Description	Shipping Wt.
EP-300-RB	1 escutcheon	.5 lb



RecordQuest™ Long Reach Escutcheon

- 304 stainless steel, powder coated
- 5.25" square
- For use with RecordQuest Long Reach starting platforms

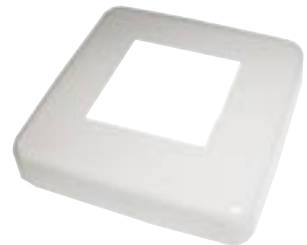
Part No.	Description	Shipping Wt.
EP-305-RB	1 escutcheon	.5 lb



Legacy Escutcheon

- 304 stainless steel, powder coated
- 5.25" square
- For use with Legacy single-post starting platforms

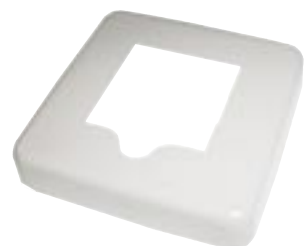
Part No.	Description	Shipping Wt.
EP-300-SG	1 escutcheon	.5 lb



Legacy Long Reach Escutcheon

- 304 stainless steel, powder coated
- 5.25" square
- For use with Legacy Long Reach single-post starting platforms

Part No.	Description	Shipping Wt.
EP-305-SG	1 escutcheon	.5 lb

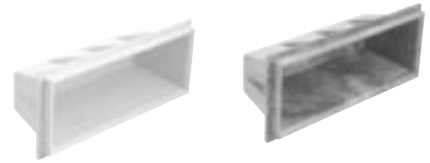


Ladder Parts & Accessories

17.5" Recessed Step

- Injection molded plastic
- Textured stepping surface for safety
- 17.5" x 7" at outer edges of lip

Part No.	Description	Shipping Wt.
62-209-4001	White	2 lbs
62-209-4002	Black	2 lbs



20" Safety-Pool Step Retrofit Kit

- Heavy-duty molded plastic
- Textured stepping surface for safety
- Available in 2, 3, 4, or 5 step kits
- Includes treads, protective side skirts and mounting hardware (US thread)
- Residential ladders have 10" spacing between steps, commercial ladders have 12"

Residential Kits

Part No.	Description	Shipping Wt.
62-209-502R	2-Step Kit	10 lbs
62-209-503R	3-Step Kit	12 lbs
62-209-504R	4-Step Kit	18 lbs

Commercial Kits

Part No.	Description	Shipping Wt.
62-209-602C	2-Step Kit	12 lbs
62-209-603C	3-Step Kit	15 lbs
62-209-604C	4-Step Kit	18 lbs
62-209-605C	5-Step Kit	21 lbs



19" Econoline Plastic Tread

- Heavy-duty plastic
- 3" deep x 18⁵/₁₆" wide, 17¹/₄" centerline mounting distance
- Available in 2, 3, 4, or 5 step kits
- Includes hardware
- Recommended for residential ladders

Part No.	Description	Shipping Wt.
LTDF-101	1 tread	
8-912E	2-tread kit, hardware	2.5 lbs
8-913E	3-tread kit, hardware	4 lbs
8-914E	4-tread kit, hardware	4.5 lbs
60-703	2-tread bolt package	.5 lb
60-704	3-tread bolt package	.75 lb



White HIP Tread

- White, molded high-impact plastic (HIP)
- 3" wide by 18" in length at the centerline
- Recommended for residential ladders

Part No.	Description	Shipping Wt.
A42073-0	1 tread	1 lb



20" Blow Molded Tread, no hardware

- White, blow molded plastic
- 4" wide and 18" in length at center line
- Recommended for residential ladders

Part No.	Description	Shipping Wt.
A42077-0	1 tread	1 lb



20" Elite Stainless Steel Tread

- 304 stainless steel
- 3" deep x 20" wide, 18¹/₄" centerline mounting distance
- Available in 2, 3, or 4 step kits
- Includes hardware
- Recommended for commercial or residential elite model ladders

Part No.	Description	Shipping Wt.
LTDF-103	1 tread	1 lb
8-912S	2-tread kit, hardware	3 lbs
8-913S	3-tread kit, hardware	6 lbs
8-914S	4-tread kit, hardware	7 lbs
60-701	2-tread bolt package	.5 lb
60-702	3-tread bolt package	.75 lb
6-300	End cap	.25 lb
6-301	Black insert	.25 lb



20" Elite Stainless Steel Tread (15° tilt)

- 304 stainless steel
- 3" deep x 20" wide, 18¹/₄" centerline mounting distance
- 15° forward tilt when properly installed
- Recommended for lifeguard stands

Part No.	Description	Shipping Wt.
LTDF-105	1 tread	1 lb
60-701	2-tread bolt package	.5 lb
60-702	3-tread bolt package	.75 lb



20" Plastic Tread

- High-impact plastic
- 4" deep x 20" wide, 18" centerline mounting distance
- Available in 2, 3, 4, or 5 step kits
- Includes hardware
- Recommended for commercial ladders

Part No.	Description	Shipping Wt.
LTDF-106	1 tread	1 lb
8-932	2-step kit, hardware	6 lbs
8-933	3-step kit, hardware	7 lbs
8-934	4-step kit, hardware	8 lbs
8-935	5-step kit, hardware	10 lbs
52470-102	Tread w/15° tilt and hardware	3 lbs
2350105	Tread w/15° tilt, only	2.2 lbs



Hinged Ladder Anchor

- Stainless steel hinge bracket pair
- Allows raising and lowering of new and existing ladders
- Installation requires 4" to be cut off of ladder
- Recommended for residential ladders

Part No.	Description	Shipping Wt.
A41657-0	Hinged ladder anchor	3.8 lbs
2463050	Hinge pin, female	.5 lb
2463060	Set screw	.5 lb
2463070	Hinge pin, male	.5 lb



Snap-Lok Hinge Bracket Assembly

- Stainless steel hinge bracket pair
- Retrofits existing ladders for raising and lowering
- Installation requires 4" to be cut off of ladder
- Recommended for Snap-lok ladders

Part No.	Description	Shipping Wt.
60-713	1 pair	4 lbs
5-116	3/8 -16 x 2 1/2" HH bolt	.1 lb
5-145	3/8" flat washer	.1 lb
5-156	3/8-16 acorn nut	.1 lb
8-118	Double button snap lock	.1 lb



White Rubber Bumper— Male

- Molded white rubber
- 2¹/₄" diameter
- For use on 1.90" tubing
- Recommended for ladders

Part No.	Description	Shipping Wt.
WRB-100A	1 bumper	.2 lb



White Rubber Bumper— Female

- Molded white rubber
- For use on 1.90" OD tubing with .049" to .065" wall thickness
- Recommended for ladders

Part No.	Description	Shipping Wt.
WRB-101A	1 bumper	.5 lb



Xpand-N-Lok Rubber Bumper — Male

- Molded blue rubber
- For use on 1.90" OD tubing with .049" to .065" wall thickness
- Recommended for ladders

Part No.	Description	Shipping Wt.
BRB-100EX	1 bumper	.2 lb



Flanges

Aluminum Deck-Mounted Anchor Flange Kit

- For surface-mounting equipment with 1.90" OD tubing
- Requires four 1/4" mounting bolts, not included
- Includes a 2³/₄" carbon steel bolt, bushing, two washers and a lock nut (US thread)
- Recommended for slides

Part No.	Description	Shipping Wt.
75-209-5866	4 flanges, hardware	4.5 lbs
75-209-5864	Hardware for 1 flange	.5 lb
75-209-5000	1 flange	1 lb



Plastic Deck-Mounted Anchor Flange Kit

- For surface-mounting equipment with 1.90" OD tubing
- Requires four mounting bolts, not included
- Includes a bolt, bushing, two washers and a lock nut (US thread)
- Recommended for slides

Part No.	Description	Shipping Wt.
75-209-5865	4 flanges, hardware	2 lbs
75-209-5864	Hardware for 1 flange	.25 lb
05-623	Single plastic flange	1 lb



Stand Tread Repair Kit

- For repairing minor damage to diving board tread
- Includes sandpaper, masking tape and gel coat

Part No.	Description	Shipping Wt.
67-209-9242	White	.75 lb
67-209-9243	Marine Blue	.75 lb
67-209-92421	Silver Gray	.75 lb
67-209-92420	Pewter Gray	.75 lb
67-209-92410	Taupe	.75 lb



Epoxy Kits

- Use to repair or install a diving board on an existing deck
- Includes epoxy resin, hardener and mounting bolts
- Recommended for diving board stands

Shipping Information		
L	W	H
8	8	6

Part No.	Description	Shipping Wt.
75-209-5868-SS	Kit with (4) 6"x1/2" bolts	4 lbs
75-209-5869-SS	Kit with (3) 6"x5/8" bolts	4 lbs
75-209-5874-SS	Kit with (5) 6"x1/2" bolts	6 lbs
75-209-5875-SS	Kit with (6) 6"x1/2" bolts	6 lbs
75-209-5876-SS	Kit with (3) 6"x1/2" bolts	4 lbs
75-209-5885-SS	Kit with (4) 7"x1/2" bolts	4 lbs
75-209-5879-SS	Kit with (4) 9"x1/2" bolts	4 lbs
75-209-5880-SS	Kit with (4) 10"x1/2" bolts	7 lbs
75-209-5889-SS	Kit with (3) 9"x1/2" bolts	8 lbs
75-209-5890-SS	Kit with (3) 10"x1/2" bolts	8 lbs

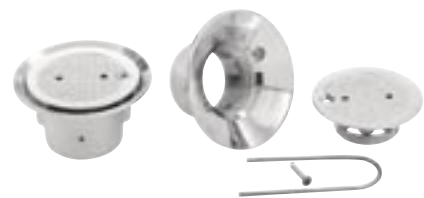


Circulation System Parts

Circular Flow Inlet Fittings

- Chrome plated cast brass
- Allows easy adjustment of flow rate and ensures smooth, even flow through return
- Includes lock screw and adjustment wrench

Part No.	Description	Shipping Wt.
A41014-0	1 outer body (2406600), control plate (A41497-0), and lock screw	1.5 lbs



Radiant Flow Inlet Fittings

- Chrome plated cast brass
- Features tamper-resistant adjustment screws
- Includes outer body, inner and outer control plates and three lock screws

Part No.	Description	Shipping Wt.
A41020-0	1 outer body (2402490), inner control plate, outer control plate, 3 lock screws	2.4 lbs
A41473-0	1 inner plate, outer plate, 3 lock screws	1 lb



Adjustable Direction Inlet Fittings

- Outer body and inner set rings are chrome-plated cast brass
- Inner directional flow fittings are made from chrome plated, solid brass rods
- Outer trim flange is 204 stainless steel

Part No.	Description	Shipping Wt.
A41024-4	Uni-Fit outer body, inner set ring, 1/2" inner directional fitting, outer trim flange	1.5 lbs
A41024-6	Uni-Fit outer body, inner set ring, 3/4" inner directional fitting, outer trim flange	1.5 lbs
A41024-8	Uni-Fit outer body, inner set ring, 1" inner directional fitting, outer trim flange	1.5 lbs
A41028-4	Inner set ring, 1/2" inner directional fitting, outer trim flange	.5 lb
A41028-6	1 inner set ring, 3/4" inner directional fitting, outer trim flange	.75 lb
A41028-8	1 inner set ring, 1" inner directional fitting, outer trim flange	1 lb



Leakless Flanges

- Use for mid-wall or through-wall connection for fittings and pipes
- One-piece, integrally cast brass fitting with 3/4" flange and NPT threads on both ends

Part No.	Description	Shipping Wt.
A41116-0	1 1/2" flange	2.25 lbs
A41119-0	2" flange	2.6 lbs



Heavy-Duty Controlled Flow Sight Glass

- Base and top are cast brass
- Sight glass is clear plexiglass
- Heavy-duty neoprene seals
- Threaded for insertion into a 1.5" female thread

Part No.	Description	Shipping Wt.
A41198-0	Sight glass	1.5 lbs



Uni-Fit Rectangular Gutter Drains and Grates

- 2 1/16" x 5 5/8", 2" drain opening
- Chrome-plated cast brass
- Includes drain, grate, and two tamper-resistant screws

Part No.	Description	Shipping Wt.
A41046-0	Drain and grate, includes 1 chrome-plated gate (2400490), 1 gutter drain (2500520) 2 tamper resistant screws (2024094)	2.8 lbs



Uni-Fit Maximum Protection 90° Drains & Grates

- 2¹/₈" x 5³/₈", 2" drain opening
- Chrome-plated cast brass
- Includes drain, grate, and four tamper-resistant screws

Part No.	Description	Shipping Wt.
A41035-0	Drain and grate, includes 1 90° grate (2401520) 1 90° gutter drain (2401540) 4 tamper resistant screws (2024207)	2.5 lbs



Deck Boxes

- Chrome-plated cast brass
- Approximately 3" deep, 3" ID
- UL and CSA International seals for quality in design

Part No.	Description	Shipping Wt.
A41192-0	Box with 3/4" openings	2.6 lbs
A41192-1	Box with 3/4" side openings and 1" bottom opening	2.6 lbs
A41192-2	Box with 1" openings	2.6 lbs
A41496-0	Hardware kit	.6 lb

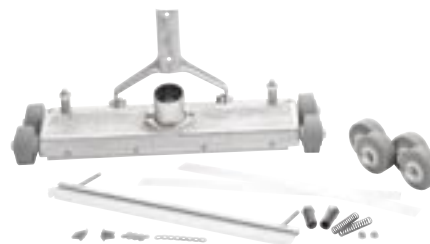


Vacuum Parts

Suck-It-Up™ Commercial Vacuum Head

- Chrome-plated cast brass
- 18" long x 5.5" wide
- Front and rear plastic wipers and nylon brush
- Available with threaded control or open control yoke
- Available for 1.5" or 2" vacuum hose diameter

Part No.	Description	Shipping Wt.
A41345-0	Head, 2" connector, threaded yoke	13.7 lbs
A41346-0	Head, 1.5" connector, open control yoke	13.7 lbs
A41347-0	Head, 2" connector, open control yoke	13.7 lbs
A41460-0	1.5" hose adapter kit	.85 lb
A41461-0	2" hose adapter kit	.7 lb
A41462-0	Threaded control yoke	1.25 lb
A41463-0	Open control yoke	1.25 lb
A41486-1	Wheel replacement kit	1.25 lb
A41487-0	Brusher/wiper replacement kit	1 lb



Vacuum Fittings (Concrete/Shotcrete)

- Chrome plated cast brass
- 1.5" female threads and 2" male threads
- Includes inner safety plug

Part No.	Description	Shipping Wt.
A41090-0	1 Uni-fit body (2403091), and 1 safety plug (2410921)	1.3 lbs



Vacuum Fittings (Fiberglass/Vinyl Liner/ Steel/Aluminum)

- Chrome plated cast brass
- 1.5" female threads and 2" male threads
- Includes brass lock nut with 2" female threads

Part No.	Description	Shipping Wt.
A41918-0	1 Uni-fit body (2403091), and 2 rubber gasket (2027370) and 1 lock nut (A50680)	1 lbs



Stanchion Parts & Accessories

Eyebolt/Expansion Shield

- Satin finish stainless steel
- Eye has a 2" OD
- Bolt is 1³/₈" long

Part No.	Description	Shipping Wt.
A41156-0	1 eyebolt (2401200), and expansion shield (2024320)	.5 lb



The Hook™ Rope Hook

- Chrome plated brass
- 3.75" long
- Accommodates a rope up to 3/5"
- Includes two set screws

Part No.	Description	Shipping Wt.
A41150-0	1 hook, 2 screws	.6 lb



Flush Anchor and Eyebolt Racing Line

- Cast brass anchor and threaded stainless steel eyebolt
- Eye has 2" OD
- Eye extends 2.5" beyond face of wall when completely inserted in anchor

Part No.	Description	Shipping Wt.
A41144-0	1 anchor, eyebolt	.5 lb
2400240	1 anchor	.25 lb
2400220	1 eyebolt	.25 lb



Rope Arrow Eyebolt Anchor™

- Chrome-plated cast brass
- 4" long, 1.5" installed
- Eye has 1.38" OD

Part No.	Description	Shipping Wt.
A41138-0	1 eyebolt	.25 lb



Line Cup Anchor with Eyebolt

- Chrome-plated cast brass
- Anchor cup is 3.25" in diameter, 3.75" deep
- Threaded eyebolt screws into anchor cup
- Eye has 2" OD
- Not Salt Pool Friendly

Part No.	Description	Shipping Wt.
A41141-0	1 cup anchor, eyebolt	1.5 lbs
2400222	1 eyebolt, washer	.3 lb



Miscellaneous Parts

U-Frame Fulcrum Cover

- Heavy-duty rubber
- 20" long
- Accommodates 1.90" OD tubing

Part No.	Description	Shipping Wt.
FC-100A	1 fulcrum cover	2.5 lbs

Shipping Information

L	W	H
20	2	2



Rapid-Fill Pool Fill Spouts

- 304 stainless steel, .049" wall
- US threaded connectors included

Part No.	Description	Shipping Wt.
A41242-0	1 1/2" fill spout	1.9 lbs
A41240-0	1" fill spout	1.4 lbs
A41227-0	3/4" fill spout	1.4 lbs



Split Tee Joining Connector

- 304 stainless steel
- Includes two steel connectors, bolts and nuts

Part No.	Description	Shipping Wt.
A41761-0	1 set	.85 lb



Hydrostatic Relief Valve

- Made from cut brass
- Not spring loaded

Part No.	Description	Shipping Wt.
A41452-0	1 valve	.5 lb

