

ANTI WAVE 650 LAUNCH STARTING BLOCK



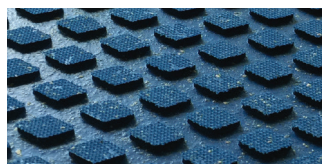
Block shown with optional coated backstroke handle

Competition platform

The Anti Wave 650 Launch block design has an updated look and functionality, with a TrueTread™ surface that is recessed and extends over the front of the block. The track start wedge can tuck beneath the footboard.

- Durable, non-slip TrueTread™
- Fibreglass construction with 316 SS fittings
- Track start with longer range is adjustable to 5 positions, and tucks away for relay starts
- Standard & quick release anchor systems
- Internal earthing wire included to allow for bonding requirements
- FINA compliant (FR2.7)

+ “No Dive” & Solarguard covers available



TrueTread™

Anti Wave 650 Launch Starting Block

| Model/Item No. | Description | SHIPPING | | | |
|----------------|--|----------|--------|-------|--------|
| | | Weight | Length | Width | Height |
| 25-61-065T | Anti Wave 650 w/adjustable track start | 21kg | 620mm | 690mm | 690mm |
| 25-61-065R | Anti Wave 650 w/adjustable track start & QR anchor | 23kg | 620mm | 690mm | 690mm |

MADE IN AUSTRALIA

FINA COMPLIANT

ADJUSTABLE TRACK START

CORROSION FREE MATERIALS

SPECIFICATIONS

650 Launch with Standard Anchor.

650 Launch with Quick Release Anchor