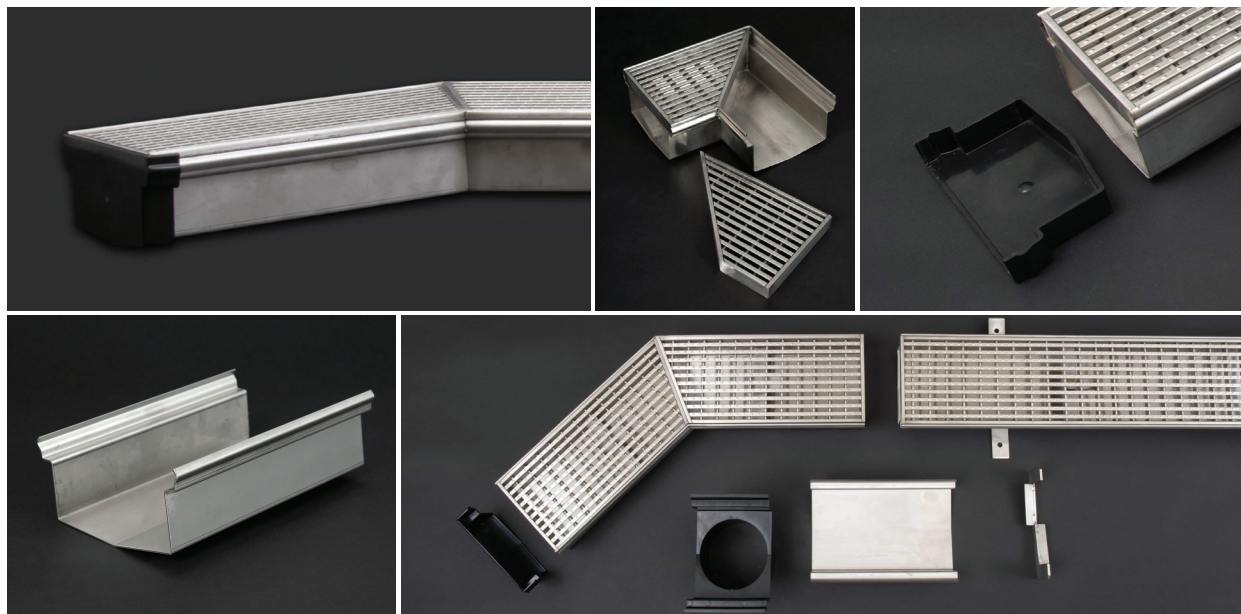


# STAINLESS STEEL GRATING



## Stainless Steel Click Drain

Australian made, anti-slip grating with 5mm gap, produced in 316 stainless steel. All components are pickled and passivated for superior protection from corrosion.

### STANDARD SIZES



(All troughs based on 100mm max depth)

+ Custom sizes and class loadings available



- Anti-slip wire with 5mm gap
- Commercial grade finish
- Class A loading
- All material from grade 316 stainless steel
- All components are pickled and passivated
- Supplied with an earthing tag
- Built in fall is available on request

## Stainless Steel Click Drain

Model/Item No.	Description
16-61-D-OUT	Stainless Steel Click Drain Outlet
16-61-D-ECAP	Stainless Steel Click Drain End caps (pair)
16-61-D-MTCOR	Stainless Steel Click Drain Mitred Corner
16-61-100-SS	Stainless Steel Click Drain 100mm (per metre)
16-61-150-SS	Stainless Steel Click Drain 150mm (per metre)
16-61-200-SS	Stainless Steel Click Drain 200mm (per metre)
16-61-300-SS	Stainless Steel Click Drain 300mm (per metre)