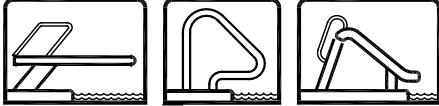


S.R. Smith Inc.™



P.O. BOX 400 1017 S.W. BERG PARKWAY
CANBY, OREGON 97013
PHONE: (503) 266-2231

	APPROVALS	DATE
PURCHASING:	Mark Kroeplin	
ENGINEERING:	William Clausen	
PRODUCTION:	Bernie Imholt	
DRAFTING:	Kevin Ball	4APR96

UNLESS OTHERWISE SPECIFIED
DIMENSIONS ARE IN INCHES,
TOLERANCES ARE:
DECIMALS: FRACTIONS:
.X ±.1 ± 1/16
.XX ±.06 ANGLES:
.XXX ±.031 ± 1/2

PROPRIETARY NOTE: Designs and/or information shown on this drawing are proprietary. The recipient agrees not to reproduce or copy in whole or part nor to make any use of it that is or may be injurious to S. R. Smith Inc.

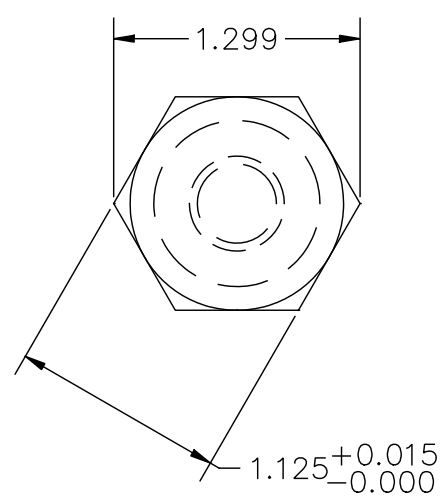
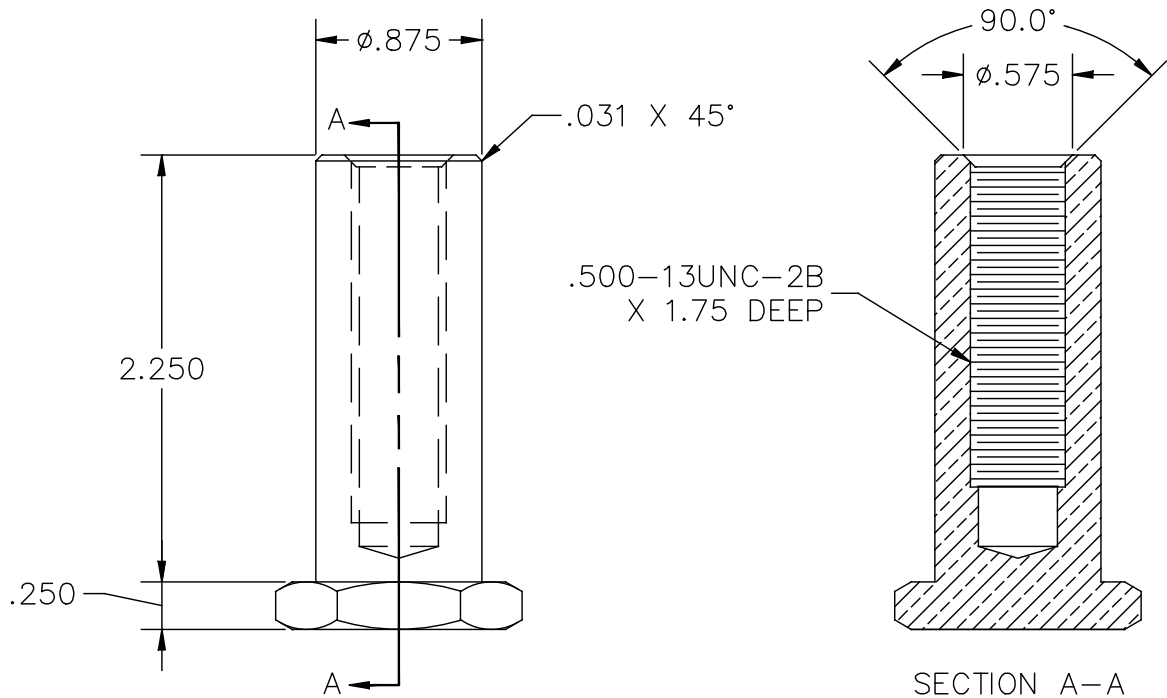
SCALE: 1.00" = 1.00"

DO NOT SCALE DRAWING

REV. DATE:

BREAK & DEBURR ALL SHARP EDGES

BORDER MAGNIFICATION X 1.0



MATERIAL: BRASS ROD

DESCRIPTION:
ANCHOR FOR FLUSH RACING LINE
ANCHOR (A41144-0)

DRAWING NUMBER			DWG. #PBR
SPIN	FILE NO.	REV.	UPDATED 8NOV95
2400240	1039	A	SHEET
			1 OF 1