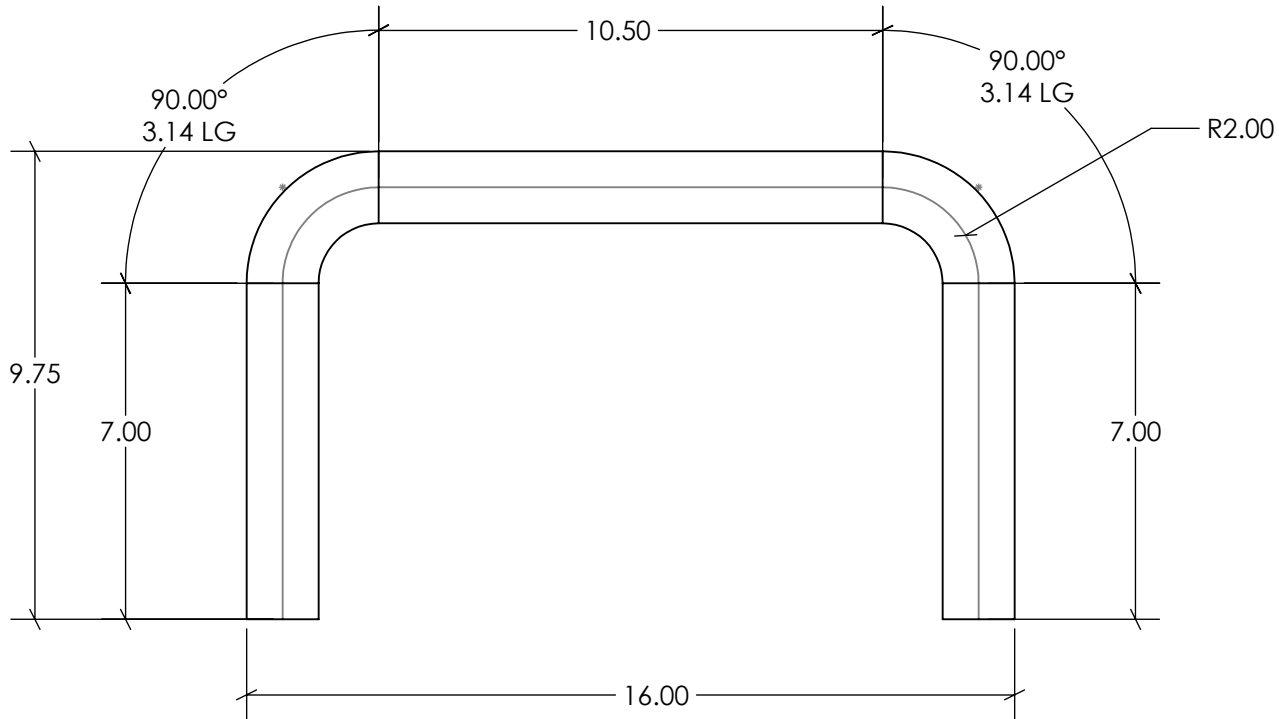
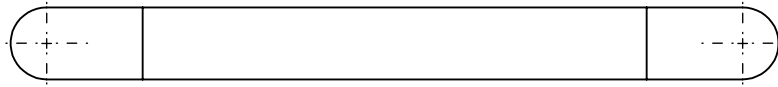


REVISIONS			
REV.	DESCRIPTION	DATE	ECN



TUBING LENGTH: 30.78"

UNLESS OTHERWISE SPECIFIED
DIMENSIONS ARE IN INCHES,
TOLERANCES ARE:
FRACTIONAL: $\pm 1/16$
ANGULAR: $\pm 1^\circ$
TWO PLACE DECIMAL: $\pm .06$
THREE PLACE DECIMAL: .. $\pm .031$

DESCRIPTION: 18" BENT TRANSFER RAIL W/OUT FLANGES	
MATERIAL: 1.50" O.D. x .120 WALL (316L) S/S	
PART NO.: EB-18B	REV. A
DRAWN BY: DTJ	DATE: 6/23/12
CHECKED BY:	DATE:



P.O. BOX 400 - 1017 S.W. BERG PARKWAY
CANBY, OREGON 97013
PHONE (503) 266-2231